



# DS800X RALLY



## ENGINE

8v DOHC Parallel Twin 270 degree firing order

## DISPLACEMENT

798cc

## RATED OUTPUT

70kW @ 9,000rpm

## MAX. TORQUE

81Nm @ 6,500rpm

## COOLING SYSTEM

Liquid-cooled

## LENGTH / WIDTH / HEIGHT / WEIGHT

2380mm / 915mm / 1450mm /

## SEAT HEIGHT

850mm

## GEARBOX

6 Speed

## TANK CAPACITY

24 Litres



FROM

# £6,999

+ OTR

# DS800X RALLY FEATURES

## OPTIONAL ALUMINIUM 3 PART LUGGAGE

A set of hard aluminium luggage consisting of x2 side panniers and a top box with mounting frames can be added to the DS800X Rally with an RRP of £1399 - However, for a 'Limited offer' the luggage can be added for just £699!

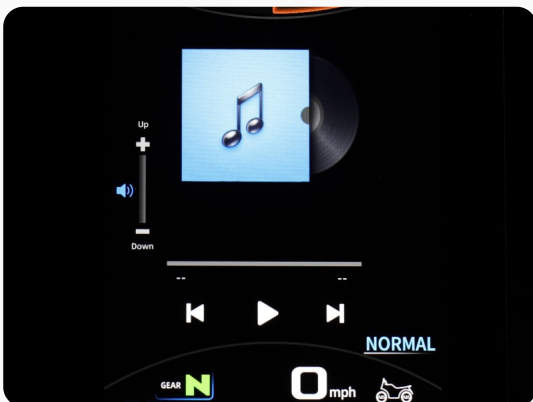


## SWITCHABLE TCS - TRACTION CONTROL

(TCS) Traction control can be quickly & easily disengaged for Off Road use

## HEATED GRIPS & HEATED SEAT

Heated grips and a Heated Riders seat are fitted as standard with 3 settings and the controls neatly integrated into the left hand switchgear



## SMART PHONE CONNECTIVITY

Smart phone connectivity via Bluetooth for receiving calls and playing music etc..

## SIDE IMPACT ENGINE BARS

Strong Tubular Steel Engine protection bars are fitted as standard.



## REAR RACK WITH BASE PLATE

Strong Tubular Steel rear Rack with a Reinforced ABS Base Plate comes fitted as standard, ready to accept the VOGELuggage system.

## REINFORCED MAIN STAND

Reinforced side stand with large foot print and centre stand fitted as standard.



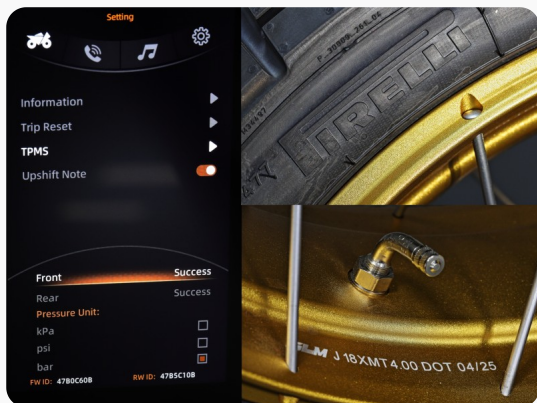
## DUAL USB CHARGING PORTS

The DS800X has both USB and USB C Ports for Powering Accessories.



## LED DRL / ACTIVE CORNERING LIGHTS

Adjustable LED DRL lights fitted as standard for improved visibility, these are also active cornering lights when the light switch is not activated



## TPMS TYRE PRESSURE MONITORING

TPMS - Front and Rear Tyre pressure sensors fitted as standard

## 7 INCH PORTRAIT ORIENTATED TFT DASH

Portrait orientation Full Colour TFT Dashboard with 7" screen for Increased visibility and Rally tower styling.



## REINFORCED LIGHTWEIGHT STEEL FRAME WITH CAST ALUMINIUM SWINGARM

The DS800X Rally has a lightweight but strong reinforced Steel frame with a cast Aluminium swing arm for improved strength and control. Both are finished in a tough, durable matte black powder-coated finish

## KYB FULLY ADJUSTABLE SUSPENSION

Fully Adjustable KYB 43mm USD front forks have 200mm of travel. At the rear a fully adjustable KYB mono-shock with separate reservoir for increased oil volume to minimise damping fade in extreme use has 190mm of travel. This KYB suspension offers a truly fluid like ride quality - smooth and controlled over any surface

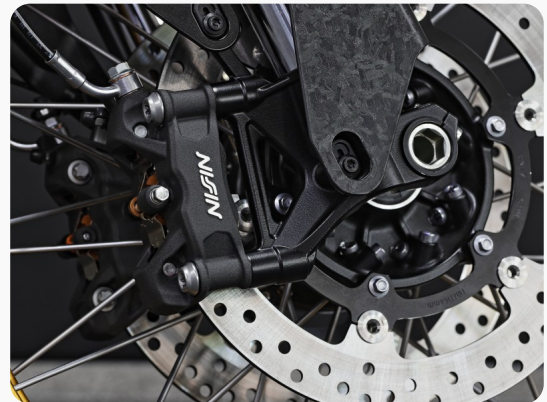


## PIRELLI RALLY SCORPION STR TYRES

Cross spoke Alloy wheels mated to tubeless Pirelli Scorpion Rally STR tyres offer outstanding performance and sure footed grip both on and off-road.

## NISSIN RADIAL BRAKING WITH TUNED ABS

High Performance Nissin radial brakes with Dual Channel ABS. The ABS is specially tuned for unpaved roads and can be switched off completely for off-road use with the push of a button.

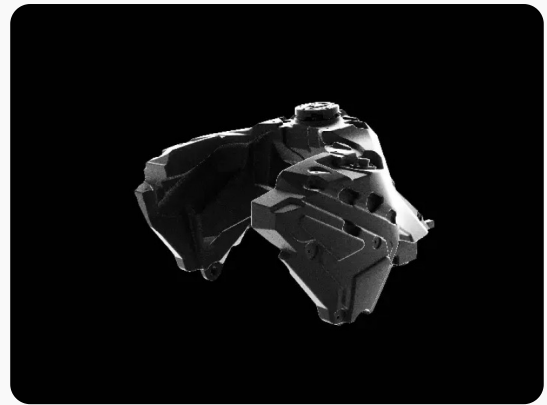


## ROTARY STEERING DAMPER

Top Yoke mounted Adjustable Rotary (Radial) CNC aluminium steering damper fitted as standard, easy to adjust on the move.

## ROTO-MOULDED 24 LITRE FUEL TANK

Huge 24 litre "roto-moulded" fuel tank offers incredible range for uninterrupted adventures. Designed with Deep Sides to keep the fuel mass low, Mass centralized and the Centre of Gravity Low



## FULL LED LIGHTING

Full LED headlights, tail lights and indicators as standard: The Stylish LED lighting system guarantees exceptional visibility and increased safety for both day & night

## FOLDING MIRRORS

Folding mirrors fitted as standard, designed to be easily lifted upwards and inwards (ie set Vertical) to avoid being damaged when riding off-road. Saves time having to remove and re-fit the mirrors when Trail Riding



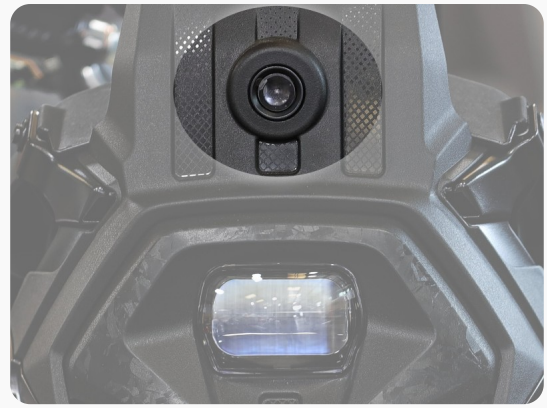
## DURABLE ABS HANDGUARDS

Durable ABS moulded hand guards come fitted as standard.



## **SAFETY - 1080p DASHCAM**

The standard fit, 1080p forward facing inbuilt camera will take recordings of your adventures via the VOGE App



## **STURDY ALUMINIUM BASH PLATE**

Robust Aluminium bash plate fitted as standard for engine protection The DS800X has 220mm of Ground Clearance !

## **CHAIN GUIDE & CHAIN GUARD**

The DS800X Rally comes equipped with both a durable chain guard and a chain guide fitted as standard.

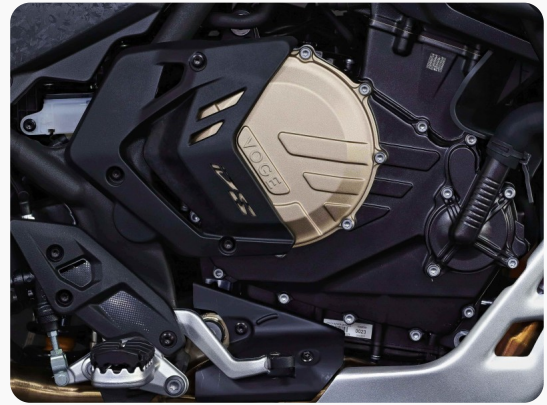


## **FOLDING GEAR PEDAL & REAR BRAKE PEDALS**

Reduces accidental damage while dodging through tough terrain or in the event of the bike going down.

## KEL 800 DOHC PARALLEL TWIN ENGINE

Equipped with an All New 798cc parallel-twin engine, the DS800X Rally delivers a maximum power output of 93.8 Bhp at 9,000 rpm and maximum torque of 81 Nm at Only 6,500 rpm. The 8v DOHC engine has a 270 degree firing order for increased traction and mimics the distinctive V-Twin sound. 6 speed gearbox with a light-action hydraulic slipper clutch



## CARBON FIBRE LOOK ABS MOULDED PLASTIC BODYWORK

The DS800X Rally has a selection of unique ABS moulded plastic panels that mimic Forged Carbon Fibre flake bodywork. These durable matte finish panels look and feel like chopped tow carbon flake.

## REMOVABLE FOOTREST RUBBERS

The rubber inserts are removeable to reveal the serrated Bear Trap foot pegs for increased grip when riding off road



## SWITCHABLE RIDING MODES

Select from two different riding modes - Road or Sport. Easy to select via the dedicated Mode button on the right hand switchgear & can be done on the move



# DS800X RALLY FINANCE

Flexible payment options to suit your budget

## HP Finance

Hire Purchase

8.90% APR

£1117.10

Monthly Payment

£1499.00

Customer Deposit

60

Months Term

Cash Price:	£7299
Total Amount of Credit:	£5800
Agreement Duration:	60 months
Interest Rate (Fixed):	4.70%
Monthly Payments:	£1117.10
Total Amount Payable:	£8,525.00

Rates available from 8.90% APR; 8.90% APR Representative. Finance is provided by MotoNovo Finance Limited, company no. 11556144, registered in Wales at 2 Central Square, Cardiff, CF10 1FS. Authorised and regulated by the Financial Conduct Authority under FRN 827851. All applications for credit are subject to eligibility and affordability criteria. The rate shown may not be the rate you are offered. MotoNovo interest rates start from [INTEREST] Fixed / 8.90% APR. MotoGB Ltd is authorised and regulated by the Financial Conduct Authority FCA 661247 and acts as a credit broker not a lender. MotoGB may receive a commission from the finance company for introducing the transaction. You can ask them to tell you the amount of that commission.

**£84.48**  
Monthly Payment

**£1460.00**  
Customer Deposit

**49**  
Months Term

On the Road Cash Price:	<b>£7299.00</b>
Dealer Contribution:	<b>£0.00</b>
Amount of Credit:	<b>£5839.00</b>
Optional Final Payment:	<b>£3421.00</b>
Total Amount Payable:	<b>£8936.04</b>
Fixed Rate of Interest:	<b>4.35%</b>
Annual Mileage:	<b>4000 miles</b>
Excess Mileage Charge:	<b>0.1p/mile</b>

Rates available from 8.90% APR; 8.90% APR Representative. Finance is provided by MotoNovo Finance Limited, company no. 11556144, registered in 2 Central Square, Cardiff, CF10 1FS. Authorised and regulated by the Financial Conduct Authority under FRN 827851. All applications for credit are subject to eligibility and affordability criteria. The rate shown may not be the rate you are offered. MotoNovo interest rates start from 4.35% Fixed / 8.90% APR. MotoGB Ltd is authorised and regulated by the Financial Conduct Authority FCA 661247 and acts as a credit broker not a lender. MotoGB will receive a commission from the finance company for introducing the transaction. You can ask them to tell you the amount of that commission.